

Post Construction Stormwater Management



Goals

- Sustainable Management Approach
- Flood Hazard Mitigation
- Water Quality
- Clean Water Act Compliance
- Aesthetics
- Integration of Open Space, SWM, Landscape Plantings

Sustainable Management Approach

Manages each drop of rain close to where it falls

- Retain, Detain, Drain
- Infiltration into groundwater (less subsidence)
- Plants uptake water (1200 GDP)
- Evapotranspiration
- Filtration (water quality)
- Reduced conveyance
- Reduced volumes

Benefits of Sustainable SWM

- Reduced Runoff
- Reduced infrastructure costs
- Reduced operating costs
- Improved water quality (MS4 permit req.)
- Greener neighborhoods
- Improved air quality
- Functional landscapes
-Each square foot of land

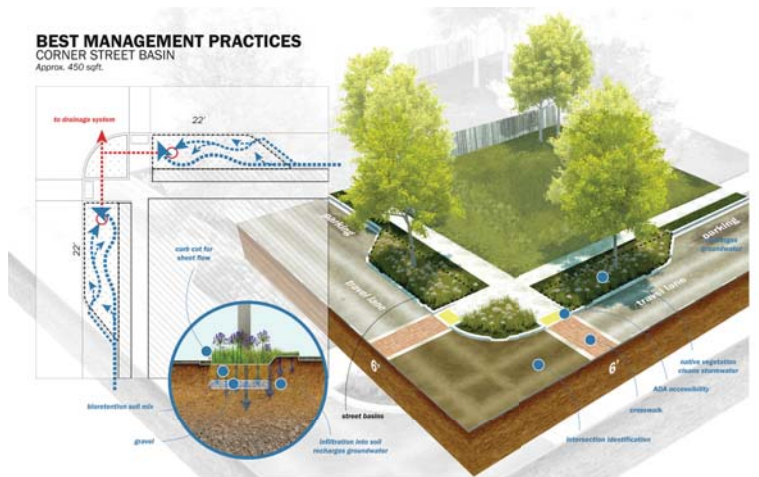
Functional Landscapes



Flood Hazard Mitigation



Flood Hazard Mitigation



Water Quality

- Fishable
- Swimmable

Water Quality



Water Quality

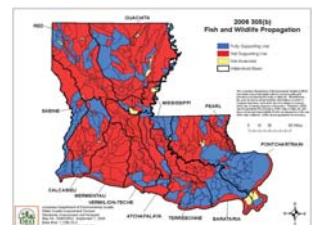
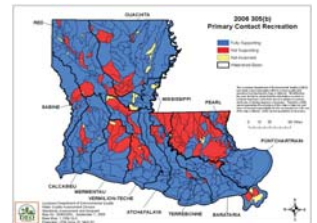
- Little Tallapoosa River, Georgia



Clean Water Act Compliance: TMDLs

- Impaired Water Bodies of Southeast LA

- Mississippi River
- Lake Pontchartrain
- Lake Maurepas
- Lake Borgne
- Bayou Terrebonne
- Bayou Lafourche
- Bayou Bienvenue
- Bayou Sauvage
- Bayou St. John
- Intercoastal Waterway
- Houma Navigation Canal
- Tchefuncte River and tributaries



Aesthetics

- Higher Quality of Life

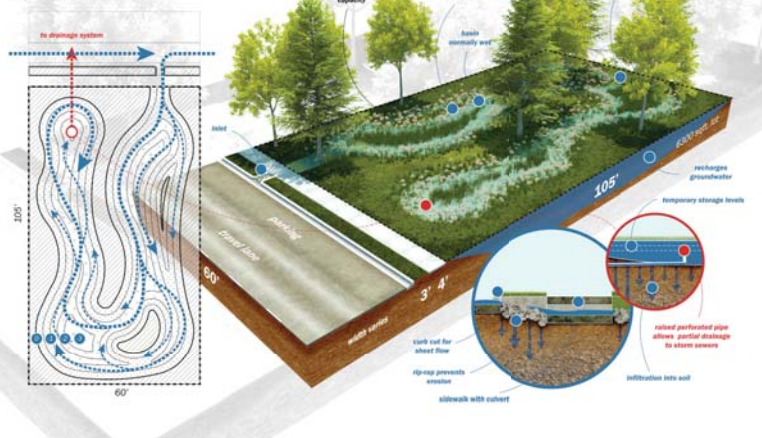


Aesthetics



Open Space + SWM + Landscape Plantings

BEST MANAGEMENT PRACTICES STORMWATER LOT - WETLAND



Public Property

- Streets, Civic Facilities, Parks
- Policies
- Funding
- Piggybacking Projects
- Set the example

Streets



12th Ave. Green Street Project, Portland, OR



Civic Facilities

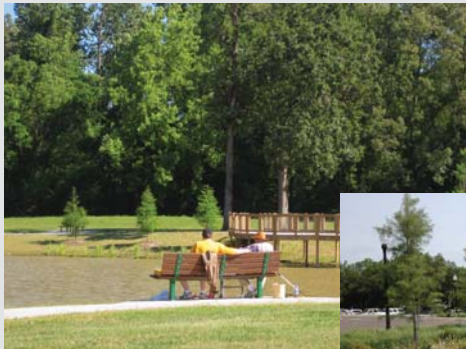


Pervious concrete at EBR Professional Development Center, Baton Rouge, LA



Native bioswale plantings at Clean Water Services Field Operations Center, Beaverton, OR

Parks



Forest Park, Baton Rouge, LA



City Park, New Orleans, LA

Policies

- Functional Landscapes
- Filter runoff
- Reduce runoff

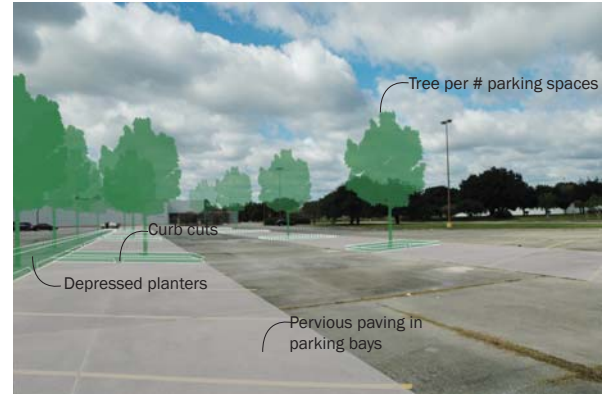
Policies

- Street Standards



Policies

- Parking Lot Standards



Funding

- Fund SWM not just drainage
- SWM funding per project



Piggybacking Projects

- Complete Streets
- Other utility improvements



Private Development

- Commercial, Industrial, Residential
- Development Codes
- Enforcement
- Incentives
- Development by Right

Commercial



Industrial



Development Codes

- EBR Parish Unified Development Code
 - Ch. 15: Floodways, Floodplains, Drainage and Water Quality
 - Ch. 18: Landscape, Clearing and Trees
- City of New Orleans Comprehensive Zoning Ordinance
 - Ch. 23: Landscape, SWM and Screening

Development Codes

- Executed and recorded “Private Water Quality Maintenance Covenants” (PWQMC) will be required for all BMPs on site prior to construction approval.

Enforcement

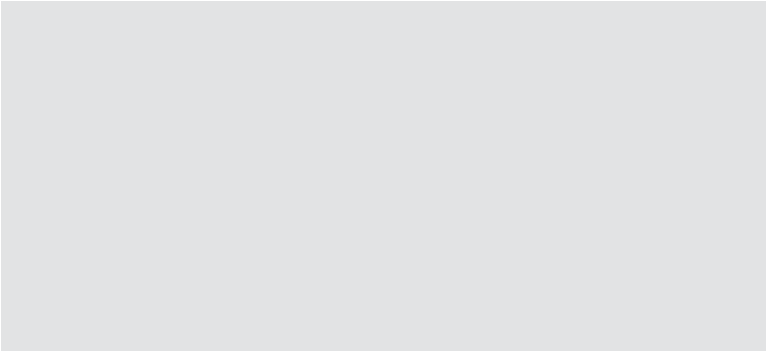
- Requires SWM Plans
- Drainage impact fees – runoff and irrigation
- Regular inspections – piggybacking with other activities
- Consistent enforcement – maintenance and operation
- Assess fines, increasing with repeat offenses
- Appeals process – not political
- Keep records

Incentives

- Reduce drainage impact fees
- Reduce or rebate development permit fees
- Reduce landscape requirements
- Fast-track permitting

Development by Right

- Require by code what you want
- What you want should be approved smoothly and quickly
- Require extensive process for variances
- Provide latitude for designers – performance standards
- Checklists of performance standards



LOUISIANA
URBAN STORMWATER COALITION
louisianastormwater.org

